



# GMT MONTHLY MEMBERSHIP PROGRESS REPORT

Results as of: 6/30/2025

Multiple District 33

LOCATION: MASSACHUSETTS

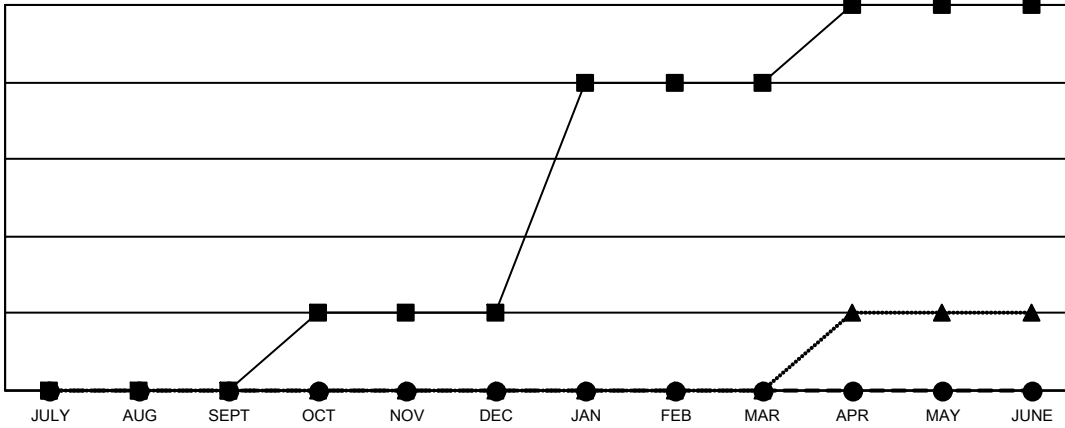
GMT: OPEN

GMT CA 1

Clubs			
RESULTS FOR 2024-2025			
QUARTER	NEW CLUB GOAL	NEW CLUBS	DROPPED CLUBS
JULY/AUG/SEPT	0	0	0
OCT/NOV/DEC	1	0	1
JAN/FEB/MAR	3	0	0
APR/MAY/JUNE	1	0	2

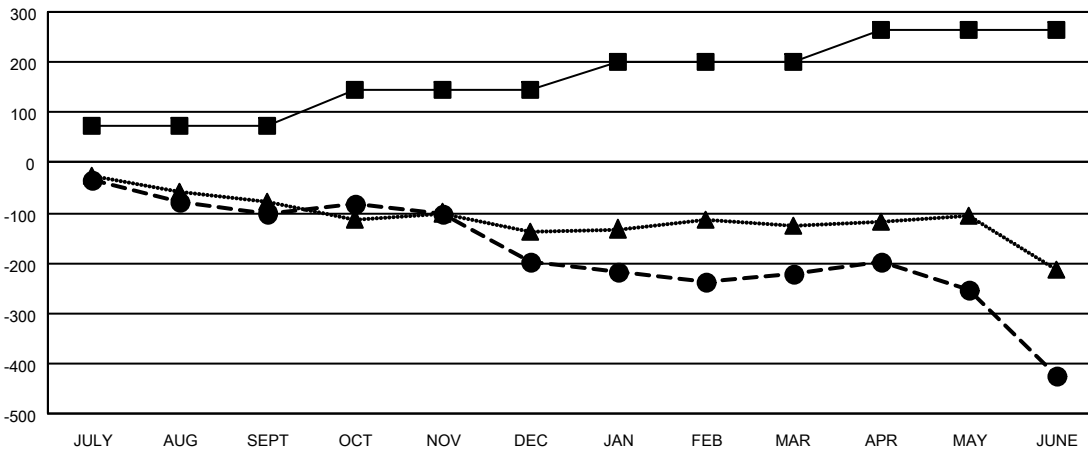
Members			
RESULTS FOR 2024-2025			
QUARTER	MEMBER GROWTH NET GOAL	MEMBER GROWTH ACTUAL	DROPPED MEMBERS ACTUAL (including transfers)
JULY/AUG/SEPT	72	100	183
OCT/NOV/DEC	73	138	205
JAN/FEB/MAR	54	146	113
APR/MAY/JUNE	64	166	314

GOALS AND ACTUAL NEW CLUBS CUMULATIVE



- - CURRENT YEAR GOALS FOR NEW CLUBS
- - CURRENT YEAR ACTUAL NEW CLUBS
- ▲ - LAST YEAR ACTUAL NEW CLUBS

GOALS AND ACTUAL MEMBERS CUMULATIVE



- - MEMBER GROWTH NET GOAL
- - MEMBER GROWTH ACTUAL
- ▲ - LAST YEAR MEMBERSHIP ACTUAL

DROPPED CLUBS: 3	116 CLUBS OF 206 ADDED 1 OR MORE NEW MEMBERS	<b>GENDER DISTRIBUTION</b>
		MALE 3,508 (61.50%)
		FEMALE 2,196 (38.50%)
<b>DROPPED MEMBERS</b>	<a href="#">CLICK HERE FOR CUMULATIVE MEMBERSHIP DATA</a>	TOTAL FAMILY UNIT MEMBERS 872
DECEASED 99		FAMILY MEMBERS PAYING HALF DUES 446
CLUB CANCELLED 43		
OTHER 667		
<b>TOTAL 809</b>		